



GUEST DIRECTORY

**The Bedford Townhouse & Café**

Bedford House, 11-12 Bedford Row, Limerick City.



[hello@thebedford.ie](mailto:hello@thebedford.ie) | +353 61 204400 | [www.thebedford.ie](http://www.thebedford.ie)

# THE BEDFORD

---

WE ARE DELIGHTED TO HAVE YOU WITH US AT THE BEDFORD, OUR  
HERITAGE TOWNHOUSE IN THE HEART OF LIMERICK CITY.

WE HOPE YOU ENJOY YOUR STAY. THIS LITTLE GUIDE SHOULD TELL YOU ALL  
YOU NEED TO KNOW ABOUT THE BEDFORD, AND HELP YOU GET THE MOST  
OUT OF YOUR TRIP.

*Denise and Peter Brazil*

PROPRIETORS



# A STITCH IN TIME



The Bedford is named after Bedford House which was built c.1830. As with most buildings of this time, Bedford House was originally two Georgian Townhouses and was once home to Peter Tait, former Limerick Mayor and founder of the Limerick Clothing Factory, which started operations right here.

This rich history and industrial connection to the building has been reignited in the creation of the Bedford Townhouse and Café (you may have noticed that our logo is based on a needle and thread, inspired by the heritage of Bedford House). You will see many references to this history throughout the property in our mix of classic and contemporary décor and artwork. With this combination of old and new, we hope to give you a warm and stylish home while you explore our wonderful city.

# PUT YOUR FEET UP AFTER ALL IT'S YOUR ROOM

---

## GETTING IN, OUT & ABOUT

We want to provide you with all the information you need to make sure you have the best stay possible at The Bedford. We're here to answer any questions you may have during our Reception/Concierge hours, but we know that other queries may arise. Here's everything you need to know about your room, and beyond.

**Reception (Open 7am-7pm)** – Dial 603 on your room phone.

### **After Hours (7pm-7am)**

For non urgent queries -  
Email [hello@thebedford.ie](mailto:hello@thebedford.ie) or leave a voicemail with Reception by dialing 603 from your room phone and we will respond once Reception reopens.

For urgent queries - Dial 115 to speak with The Bedford

In case of emergency - First dial 9 and then 999/112 at any time

**Front Door** – Our front door is a secure door and can be opened from the outside with your keycard using the panel on the right. If you lose your card, or have any difficulty accessing The Bedford, just use the intercom on the wall. We'll ask you to confirm your name and room number, and then we'll give you a pin to enter the building and your room.

**Please note that The Bedford is monitored 24/7**



Z Z Z...



## YOUR ESSENTIALS

**Safe & Sound** – We recommend keeping all your valuables in the safe. To operate, just close the door, enter a 4-digit pin number (don't forget it!) and press lock. Just enter your pin number again to get back inside.

**Wifi** – Stay connected while at The Bedford. Please connect to the The Bedford Guest network using the password "thebedford"

**Air Con** – Need some temperature control? Adjust the settings using the console on the wall under the AC unit to make things just right.

**Phone Calls** – Dial 9 first followed by the area code and the landline phone number. Calls to any mobile numbers or to any locations outside Ireland or the UK cannot be made from your room phone.

**Water** – You'll find complimentary still and sparkling water in your room.

**Ice** – You can get ice from the Smeg fridge in The Parlour Room in the basement using the ice bucket in your room.

**Coffee/Tea** – In The Parlour Room in the basement, there is a bean to cup coffee machine where you can be your own barista and make our Ponaire Indian Blend coffee. There is also fresh Barry's Tea and still and sparkling water for you to enjoy.

**Shower** – The shower can be turned on from the right hand side, turn right for shower head and left for hand shower. The temperature can also be controlled from here.

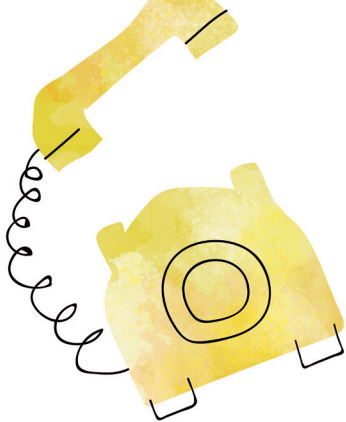
**Toiletries** – We have eco-friendly spa products by Anyah for you to enjoy - find them in your bathroom!

**Blowout** – Your hairdryer is located in the bottom of the wardrobe.

**Iron / Ironing Board** – Tucked away beside the wardrobe.

**Laundry** – Laundry bags available in your wardrobe. Please contact Reception for any laundry requirements.





**Smart TV** – To access over 70 TV and radio channels, just hit the Home or List button on your Smart TV remote.

**Luggage Rack** – Your luggage can sleep in the drawer just under your wardrobe.

**Power Sockets** – You will find power sockets on both sides of the bed and at the desk area. USB charging points are also available. If you need an adaptor please contact Reception.

**Housekeeping** – Your room will be cleaned every day which will include a towel change. Linen is changed every second day for guests staying longer than two nights. For any further requests, just contact Reception.

**Printing** – If you need anything printed please email [hello@thebedford.ie](mailto:hello@thebedford.ie) from 7am to 7pm and please reference "print request".

**Smoking** – Please note that The Bedford Townhouse & Café is a non smoking/vaping building. Guests can smoke outside the front of the Townhouse on Bedford Row. There is a €250 room fine for any guest smoking/vaping in non-designated areas of the building.

## SECURITY

For your security, The Bedford is monitored 24 hours.

Please take note of the fire escape plan which is displayed on the back of your bedroom door.

In the event of a fire, please proceed to your nearest emergency exit.

Do not use elevators in the event of a fire.

# CHECKOUT

---

**Checkout Time -**

Mon - Fri: 11am

Sat - Sun: 12pm

**Leaving Before 7am or  
after 7pm**

- Just leave your key in the room and head on out.

**Luggage Storage** - Available at Reception between 7am and 7pm.

# WAKE UP TO A BEAUTIFUL WELLNESS BREAKFAST

---



Breakfast is served in The Bedford Café on the ground floor. Just head out the Townhouse front door and head in the Café entrance (right beside Reception). Our friendly staff will look after you.

We offer two types of wellness breakfasts to guests which our Café staff will be happy to talk you through. Our breakfasts are made from the freshest of ingredients which are locally sourced. Please let our staff know if you have any dietary requirements.

**Mon to Fri** - 7:30am – 10:30am

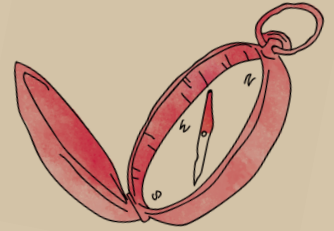
**Sat & Sun** - 8.00am – 11.00am

Please note, the Café can get quite busy at the weekends, so we recommend calling Reception so that we can hold a table.

**In a Hurry?** - No problem, we offer grab and go options (available from 7:30am - 11am).

# EXPLORE THE TOWNHOUSE

---



## GROUND FLOOR

**The Bedford Café** – Enjoy your breakfast in the surroundings of our contemporary city Café. Soak up the warm ambience, sip on our Ponaire specialty coffee and enjoy our artisan food menu from local suppliers. Also take note of the exposed original stone wall which dates back to 1830.

## FIRST FLOOR

**Rooftop Garden** – A little oasis in the city. Grab some air and relax in our rooftop garden under the (occasional) sunshine or stars. Please note there is no smoking/vaping permitted on the rooftop garden area for fire safety purposes.

## BASEMENT (Open 5.30am - Midnight daily)

**The Parlour** – Stretch your legs and relax in our parlour room. This space is available for guests to work or unwind, and also avail of our weekly movie nights. Our Ponaire specialty coffee, teas and herbal teas are also available here until midnight for guests to enjoy. This area is also available to book as a day time meeting space.

**The Bedford Row Heritage Trail** – take a stroll back in time. See the map of Limerick City as it was back in 1897 and take in the advertisements of businesses that operated on this very street over 120 years ago.

**The Bedford Gym** – Feel the burn, guests can avail of our gym which includes treadmill, bike, cross trainer, machine weights and free weights.

**Steamroom** – Blow off some steam in our Turkish Mosaic Steamroom.

Please note you require your keycard to access the basement area of the Townhouse.



## LIMERICK, YOU'RE A LADY

Welcome to Limerick, a beautiful Georgian city with delicious food markets, dazzling street art and historical treasures. Here's our top list of things to do, what to see and places to eat in the Treaty City.

**Limerick City Gallery of Art** - A museum with the best, and largest, contemporary art collection in the region. This historic building looks out over People's Park.

**Hunt Museum** - A historic 18th-century former Customs house with one of Ireland's largest private collections of art and antiquities, from Neolithic artefacts to works of art by the likes of Picasso and Yeats.

**King John's Castle** - Not only is this one of the best preserved Norman castles in Europe with 800 years of history, but it also delivers possibly the best views of the River Shannon and surrounding city.

**The Milk Market** - A bustling weekend market, where music is played, delicious coffee is brewed, and mouth-watering food is sold. Here you'll always find something to savour.

# LIMERICK CITY

---

## GETTING AROUND

You will be glad to know that you are staying in the most central location in Limerick City. All city attractions and amenities are within walking distance.

**Map** - please ask at Reception for one of our city maps or you can find us on Google maps to get your GPS location.

**Bus/Train/Air** - The city's main train and bus station is located 10min walk from The Bedford. Shannon Airport is located 25km away and is best reached by Airport Transfer or by Taxi. Parking for The Bedford is available at the Q Park on Harvey's Quay, located across the street from the The Bedford.

**Taxi** - There is a taxi rank just around the corner or you can use the My Taxi App where you can pay by card.

**Bikes** - [www.bikeshare.ie/limerick](http://www.bikeshare.ie/limerick)

## EATING OUT

**The Bedford Café (Open 7.30am - 4.30pm daily)** - Attached to the Townhouse, perfect for breakfast and lunch.

**The Buttery** - A few doors down from the Townhouse, great for lunch, dinner, and the cocktails are a must!

**Freddy's Bistro** - An award winning restaurant housed in a restored 19th-Century building.

**Taikichi** - Authentic Japanese cuisine, on Limerick's main street.

**Curragower** - Located across the river from King John's Castle this gastropub has excellent seafood options.

**Cornstore** - A stylish restaurant that specialises in organic steak and seafood.

**Need a reservation?** - Our Concierge will be happy to arrange this for you. Please email [hello@thebedford.ie](mailto:hello@thebedford.ie) or just stop by our Reception from 7am - 7pm.

## WHAT'S ON

Call our Reception for our Concierge Recommendations for dining & drinks, health & beauty and sites & attractions to enjoy during your stay in Limerick.

[Limerick.ie/events](http://Limerick.ie/events)

For any visit, event or surprise you wish to arrange we will be happy to help you with this.



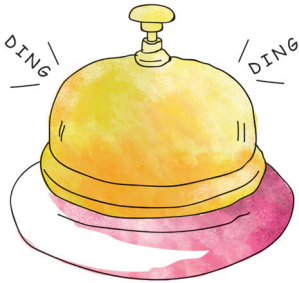
# HOW ELSE CAN WE HELP?

---

**Any requests?** - If you find yourself in need of anything, such as extra towels, extra pillows, recommendations or directions, just ask at Reception and we will do our best to accommodate your needs.

**Want to keep in touch?** Sign up to our mailing list at Reception,

**Looking to book again?** We would love to see you again, for the best rates please book on our website [www.thebedford.ie](http://www.thebedford.ie). In the unlikely event that you find a cheaper price elsewhere, let us know and we'll match it.



**THANK YOU FOR STAYING AT THE BEDFORD**



